



DERBY SENIOR CENTER NEWS

Visit us at 293 Main Street, Derby, CT 06418 • Call us at 203.736.1484 • Email us at seniorcenter@derbyct.gov

January 2022



Did you Know? Derby is the smallest city in CT by area at 5.3 square miles.

CENTER INFO

Hours of Operation:

Monday -Friday: 8:30 am - 4:30 pm
Any changes will be posted.

Our Staff

Christine Sonsini | Executive Director

Phone: 203-736-1485

Fax: 203-736-1486


Email: csonsini@derbyct.gov

Dawn Hebert Assistant Director

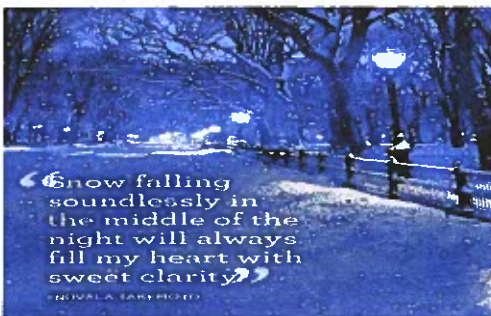
Phone: 203-736-1484

Fax: 203-736-1486

Email: dhebert@derbyct.gov

 In the case of inclement weather the center will follow the Derby school system for center closings. Any questions please call the center.

QUOTE OF THE MONTH:



POINTS OF INTEREST

- The Elderly Commission meeting will be held on Monday, January 10th at 3:00pm
- The Executive Board will meet on Tuesday, January 11th at 10:00am
- Parish Nurse from Griffin Hospital will be here for blood pressure checks on Tuesday, Jan. 11th, 12:30-2:30pm
- Medicare Counseling is available for those of you who have questions on Medicare. Please call the center at (203) 736-1484 to schedule an appointment
- Membership- Reminder: If your last name begins with A-N your renewal is due in Jan. If sending in your membership please include a self addressed stamped envelope. Going forward if your membership is 6 months overdue you will no longer receive a newsletter until your membership is brought up to date. This will be enforced beginning Jan 2022.

Volunteers:

We are looking for Volunteers to call Bingo on Tuesdays from 1pm—3pm sign up in main office. And assist with other tasks, If interested please contact the office.

Facebook page- The Derby Senior Center's Facebook page is up and running . Please stop by and like our page.

Email- If you have an email address, please kindly call the office so we can add it to our records. This will make communication easier in times like these.

CLOSED The Center will be closed on Monday, January 3rd, 2022 in observance of the New Year holiday. Happy Holidays to you and yours!





WELCOME TO THE DERBY SENIOR CENTER

The Centers purpose is to serve as a resource center providing a broad range of services and activities to meet the diverse social, physical, and intellectual needs of older adults.

NEW INFORMATION

- ♦ AARP is looking for tax preparer volunteers to assist in income tax prep. See center for more info.
- ♦ TAX PREPARATION provided by AARP will begin on Thursday, Feb. 3rd—April 14th from 9-11 with 12 appointments available each Thursday. Please call the center for an appointment and see insert for further information needed.
- ♦ St Vincent DePaul—237 Roosevelt Dr., Derby is looking for volunteers to fill a variety of openings. Please stop by if you are interested.

THANK YOU TO EVERYONE WHO DONATED TO OUR LOCAL CHARITIES:

- * Toys 4 Kids drive—we collected \$300 in gift cards.
- * Sock Drive for Veterans
We collected \$336.00 and donated approximately 25 packages of socks
- * Food Pantry—We donated a full trunk of grocery bags to St. Vincent DePaul food pantry the week of Thanksgiving. We are still in the process of collecting food and will make a drop the week of Christmas as the shelters are running very low.
- * The Knitting & Crocheting Group is asking for yarn donations. Any donations would be greatly appreciated.
- * All donations can be dropped off at the center during business hours. I thank you all in advance for helping out our local causes.

APPLE REHAB

SHORT TERM REHABILITATION • ORTHOPEDIC / SURGERY REHABILITATION
LONG TERM CARE • PALLIATIVE & HOSPICE CARE • RESPITE

Please contact us for a Tour

Rita Carrier - Dir. Of Admissions • 203-922-3679 • rcarrier@apple-rehab.com

SHELTON LAKES

5 LAKE ROAD, SHELTON, CT 06484
Built by Family for Families, for over
50 years, committed to Excellence.



GRIFFIN PHARMACY
& GIFTS

PHONE: 203-732-1490 • FAX: 203-732-1452
MONDAY-FRIDAY 9AM-7PM • SATURDAY 9AM-3PM

FREE PRESCRIPTION
DELIVERY available
throughout the Lower
Naugatuck Valley

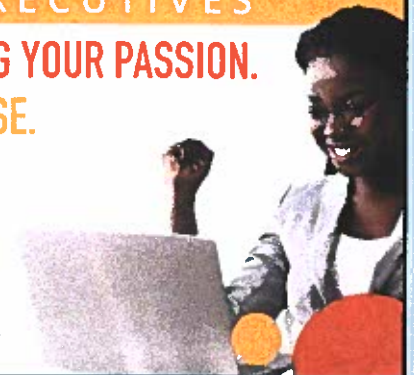


WE'RE HIRING

AD SALES EXECUTIVES

BE YOURSELF. BRING YOUR PASSION.
WORK WITH PURPOSE.

- Paid Training
- Some Travel
- Work-Life Balance
- Full-Time with Benefits
- Serve Your Community



Contact us at careers@4lpi.com
www.4lpi.com/careers

Puzzled about Medicare?

Medicare options can be confusing.
Let me help you put the pieces together.

I specialize in helping people better understand their Medicare benefits. My approach is simple: We discuss your individual goals and needs, and then I help you understand your choices and select the plan that's right for you. Contact me today to schedule your free consultation.

Tyler Machie-Marsh Insurance Agent
Direct: 203-693-7030 Cell: 203-535-7428
tyler.machie-marsh@bankerslife.com



Underwritten by: Colonial Penn
Life Insurance Company
BANKERS LIFE



MONTHLY REMINDERS

Haircuts

Haircuts will now be offered on the second Monday of the month (check calendar for dates) Price is \$10.00 Please call office for appointment

Veterans Services & Benefits

Please contact Gabor Kautzner at (203)736-1484 to set up appointment on Fridays

Parish Nurse Blood Pressure Screenings—Tuesday,

December 14th, 12:30—2:30pm

Reiki—Thursdays by

appointment only. Please

contact the center to schedule Sign In

PLEASE remember to sign into the building when you enter.

There are sign in sheets on desks in both entrances Please fill in all sections.

Special Events Meals

Please note that special events meals need to be paid for by the Friday prior to the event.

JANUARY CENTER UPDATES

Volunteer sign in book—on desk at entrance—please sign in if volunteering.

AARP Safe Driving Course

Online option:

www.aarpdriversafety.org We are scheduled to begin in-person classes in March. Watch newsletter for details

Volunteers We are still in need of bingo callers. We ultimately would like to have 4 so that everyone who would like to play can, people only have to commit to calling 1 time a month and we have coverage for vacations, etc.

HOURS—Monday—Friday 8:30–4:30pm

ANNOUNCEMENTS

—Please read From the Director's desk below for new information.

-If you use Valley Transit for grocery shopping on Fridays, please call the center as we are trying to compile a

list of riders. Thank you for your help.

Crafts/Events Group — We are looking for members to join our Crafts/Events group. The group meets on Thursdays and assists with special events, menu planning, new program ideas, event decorating, crafts, etc. If interested or have questions please contact the center or stop into a meeting. All are welcome.

Knitting & Crochet Group— is in need of donations of yarn for their group. Please drop off donations at the center during business hours.

JANUARY ANNOUNCEMENTS

From the Director's desk:

Hello Everyone!

I cannot believe that we have already closed another year!! How quickly time flies by! I want to thank you all for everything you have done to make this very difficult past year a success! Unfortunately, we are still in a pandemic so therefore we still have some rules to follow. The CDC is currently recommending that you wear masks indoors even if you have been fully vaccinated. If you are **NOT** vaccinated, you **WILL** have to wear a mask at all times while in the center. This is for the safety of all (both vaccinated and unvaccinated). If you have not already done so, please stop by the center and show us your vaccine card so we can add you to the list.

VERY IMPORTANT INFORMATION: If you park in the parking garage for programs you must have a parking sticker on your car or you will be ticketed. If you currently do not have a parking sticker please stop by the office with your car info and license plate number and we will give you one.

Tax season is fast approaching. AARP will be providing tax preparation here on Thursdays starting Feb 3 thru April 14th. This is by appointment only and

we have 12 slots every Thursday. Call the center to reserve your space. A few special events on our calendar include a craft group & hot chocolate social with Ansonia High school students, cupcake decorating class, and lastly we are offering a **Free Lunch & Learn** in collaboration with Peoples Bank on Financial Safety for Seniors. **RSVP required. We will be offering a mobile vaccine clinic at the same time if you need a booster or any of your vaccines.** We are here daily if you have any questions, concerns or just would like to chat for a few minutes. Please stay healthy and safe. And have a wonderful holiday!

Best regards,
Christine Sonsini

PLEASE NOTE: The Center will be **CLOSED** on Monday, January 3rd, 2022 in observance of the New Year and Monday, Jan 17th, 2022 in observance of Martin Luther King day.

In Memory Of. Please keep all those who have passed in your thoughts and prayers. Especially Barbara Standley.

MEALS

FREE LUNCH & LEARN FINANCIAL SAFETY FOR SENIORS

Provided by Peoples Bank

GRIFFIN HOSPITAL MOBILE VACCINE CLINIC will be onsite for those who need boosters or any vaccine.

Thursday, JANUARY 13th
12:30—1:30pm

RSVP required for lunch by
Tuesday, January 11th

DERBY SENIOR CENTER

293 Main Street
Derby, CT 06418-1938



PRST MKT.
U.S. POSTAGE
PAID
SHELTON, CT
PERMIT NO. 727

Address: 293 Main Street Derby, CT
06418

Phone: (203) 736-1484

Email: seniorcenter@derbyct.gov

Fax: (203) 736-1486

CURRENT TRIP SCHEDULES—CALL DAWN FOR SIGN UP OR INFO

Transportation for seniors is available 5 days a week from Valley Transit District (VTD) For more information or to schedule a pick up call 735-6408 Free transportation to & from the center on Tuesdays—call VTD 24 hour in advance for pick up

Super Bowl Sunday & Valentine's Day with your Sweetheart—Atlantic City	Price \$429dbl, \$629 Sgl and bus only option	Feb, 13-15, 2022
Love, Sex & the IRS at the Thomaston Opera House	Price \$109	Feb. 20, 2022
CT Flower Show: Rhythm & Blooms—Hartford	Price \$79	Feb. 24, 2022
St. Patrick's Festival, Silver Birches Resort, PA	Price \$125	March 17, 2022
Resorts Casino Atlantic City	Price \$309 dbl, \$419 sgl	April 24-26, 2022
Luncheon Show at Chowder Pot featuring Rich Wilson	Price \$94	April 26, 2022
Lunch at Storowtown Tavern & Matinee Show at Majestic Theater (9 to 5 The Musical)	Price \$109	May 5, 2022
Lunch at The Aqua Turf with a performance by Dancing Dream—ABBA Tribute Band	Price \$106	May 18, 2022

*** some trips may depart from Stratford if not enough people for p/u in Derby***

LONG TRIPS

Colorado Rockies (9 days)	Price \$2999pp/dbl \$3699 single	May 20-28, 2022
Alaska Discovery Land & Cruise (12 days)	Price \$5499 pp/dbl \$8399 single	June 28-July 9, 2022
Danube River Cruise (11 days) \$99 R/T air fare	Price \$4498 pp/dbl \$6648 single	Sept. 25- Oct 5, 2022
Irish Splendor (8 days)	Price \$2899pp/dbl \$3249 single	Oct 5-12, 2022

Please see center for flyers or call for further information

ALL TRIPS SUBJECT TO CANCELLATION - If minimums are not met

Address: 293 Main Street Derby, CT **Phone:** (203) 736-1484 **Email:** seniorcenter@derbyct.gov **Fax:** (203) 736-1486

Stay informed and protected.

**We invite Derby and Ansonia Seniors to
a Free Safety Lunch-and-Learn.**

**January 13, 2022* | 12:30pm - 1:30pm
Derby Senior Center
293 Main Street | Derby, CT
(parking is available in garage on Thompson Place)**

Learn how not to become a victim of fraud and financial scams while enjoying lunch on us. This session will focus on fraud and scam prevention and other ways to protect yourself financially.

RSVP by January 11, 2022 to Christine Sonsini at 203-736-1484.

Griffin Hospital Mobile Covid Vaccine Clinic will be on site for your convenience.

*Snow date January 14th



AARP Foundation Tax-Aide



In-Person

We provide tax preparation assistance



Working for You

We work hard to make sure you get every tax credit and deduction you are entitled to



Welcoming and Free

The program is open to taxpayers of all ages. AARP membership is not required.



IRS-Certified

Our volunteers are trained and certified by the IRS

To schedule an appointment or more information contact the Derby Senior Center at 203 736 1484

We can help with:

- Social Security benefits paid to you for the year
- Railroad Retirement benefits
- Interest earned, proceeds from sales
- Pensions, annuities or IRA distributions
- Earned Income Credit
- Mortgage interest and property tax
- Contributions to charity
- Tuition & student loan interest

For a complete list of what we can help with and documents needed to complete a tax return, visit aarpfoundation.org/taxaide.

What you need for your appointment:

- For a married couple filing jointly, both spouses must be present
- Photo identification for you and your spouse (if married)
- Social Security cards or ITIN documents for you, your spouse and/or dependents
- Birth dates for you, spouse and/or dependents
- Copy of last year's tax return
- All forms W-2, 1098 and 1099
- 1095 forms if you purchased insurance through the Marketplace (Exchange)
- Information for other income
- Information for all deductions/credits
- Proof of savings or checking account and routing numbers (for direct deposit of refund)

Attention - Updates:
Painting time change Wednesdays 10 - 12pm
Cupcake decorating class - cancelled for Jan.